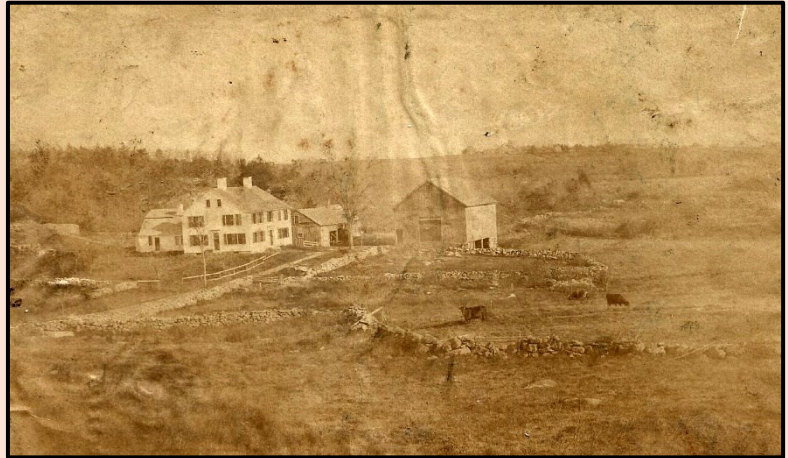


**Rocky Pond Farm**

This homestead is located on the parcel of land known as The Rocky Pond Farm. This fine example of Georgian Architecture was originally built on the 300-acre tract purchased by James Longley, Esquire on the hill below the site of the East School House. The hill became known as Longley Hill since the Longley farm covered much of the hill. The hill would later be commonly called by some of our Northborough neighbors as ‘Inspiration Point’ because of its beautiful and inspiring views to the north and west.

It was the families of James Longley along with that of Charles Bigelow, who developed the Rocky Pond area of Boylston. James, a descendent of Thomas Longley, Bishop of Durham, Cardinal and Lord Chancellor of England, had moved from Groton to Northborough where he apprenticed with Samuel Gamble, a carpenter, until age 21 years and then realizing the importance of education, took to gain a formal education. James led a varied and adventuresome life; during the Revolutionary War he had served in the marine or privateering service under Commodore Moody, and then later joined the Continental Army where he fought at the Battle of Saratoga, and in the Battle of Long Island.



**Rocky Pond Farm with Barns**

Soon after the close of the war, James married Molly Bartlett of Northborough, and settled on this rough and rocky land where through much ingenuity and toil, he became a successful farmer.

“He was the first farmers of Boylston to use modern and improved steel plows instead of the old-fashioned wooden ironshod mould boards, an experiment at which the neighboring farmers laughed and scoffed until they beheld the wonderful and amazing results.”<sup>1</sup>

He was one of the first farmers of Boylston to plant orchards for fall and winter fruit. It was also on this farm that the first orchard of grafted apples was planted in the town. James developed his land into one of the finest farms in the area.

James became a prosperous New England farmer, and very active in town affairs; serving on the Board of Selectmen, as an Assessor, as Town Treasurer, on the School Committee and as a Representative to the General Court.



**25 Rocky Pond Road**

“He was chosen by the town of Boylston to oppose the incorporation of the Second Precinct of Boylston, Holden and Sterling, and again in 1807 to oppose the incorporation of that Precinct as a separate town, and was one of the committee to divide the town property between the towns of Boylston and West Boylston; and was always deeply identified with whatever tended to increase and develop the best interests of the community.”<sup>2</sup>

James and Molly spent their lives on their Rocky Pond farm where they reared eleven children. He died in 1837. The farm was subsequently owned by his son, Otis Longley, and passed out of the Longley family in 1848. It remains a beautiful privately owned historic homestead to this day.

<sup>1</sup> Boylston Historical Series, Bruce D. Filgate, 2012

<sup>2</sup> Centennial Celebration of the Incorporation of the Town of Boylston, Massachusetts, 1886